



SMART-C

customs & logistics facilities



Central Adriatic
Ports Authority

Ports of Pesaro, Falconara Marittima, Ancona, S. Benedetto, Pescara, Ortona



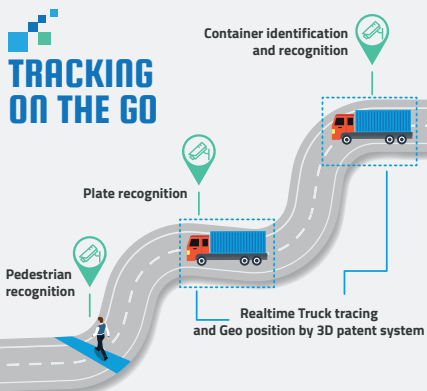
Co-financed by the Connecting Europe
Facility of the European Union

SMART-C is the innovative ICT action implementing Artificial Intelligence algorithms to manage the traffic of trucks in the port area: the aims are the improvement of the quality of the traffic related to ferry services - embarking and disembarking operations, security checks and custom clearing procedures - and the development of a suitable answer to the truck traffic growth in the port of Ancona with a special care about the environmental sustainability.

In July 2019, the Central Adriatic Ports Authority and Italian Customs Agency signed a Memorandum of Understanding for the digitalisation of the procedures of the port of Ancona. SMART-C is the main action of this initiative.

MAIN BENEFITS

- **INNOVATION**
- **ENVIRONMENTAL SUSTAINABILITY**
(estimated yearly traffic decrease of 60.000 km)
- **SECURITY**
- **EFFICIENCY**
- **INTEROPERABILITY**
(dematerialisation of the information flows)
- **POSITIVE EFFECTS FOR LOGISTIC OPERATORS**



The virtual tunnel links Scalo Marotti with the ferry terminal Customs Gate, using AI technology as an innovative solution for the secure transfer of the cargo.



WHY PORT OF ANCONA?

Port of Ancona is one of the main Italian infrastructures for **short sea shipping flows** and it is one of the main terminals of the Motorways of the Sea (core node port on the Scandinavian - Mediterranean corridor).

Being a European Gateway to the Eastern Med, the Port of Ancona has:

- More than **4 millions tons of goods** per year transported by ferries
- Relevant **freight traffic to/from third countries**, with the need to find efficient customs services and effective controls
- Limited extension of the port areas that is really closed to the city centre.

A real need to find **innovative solutions to maximise the land use**

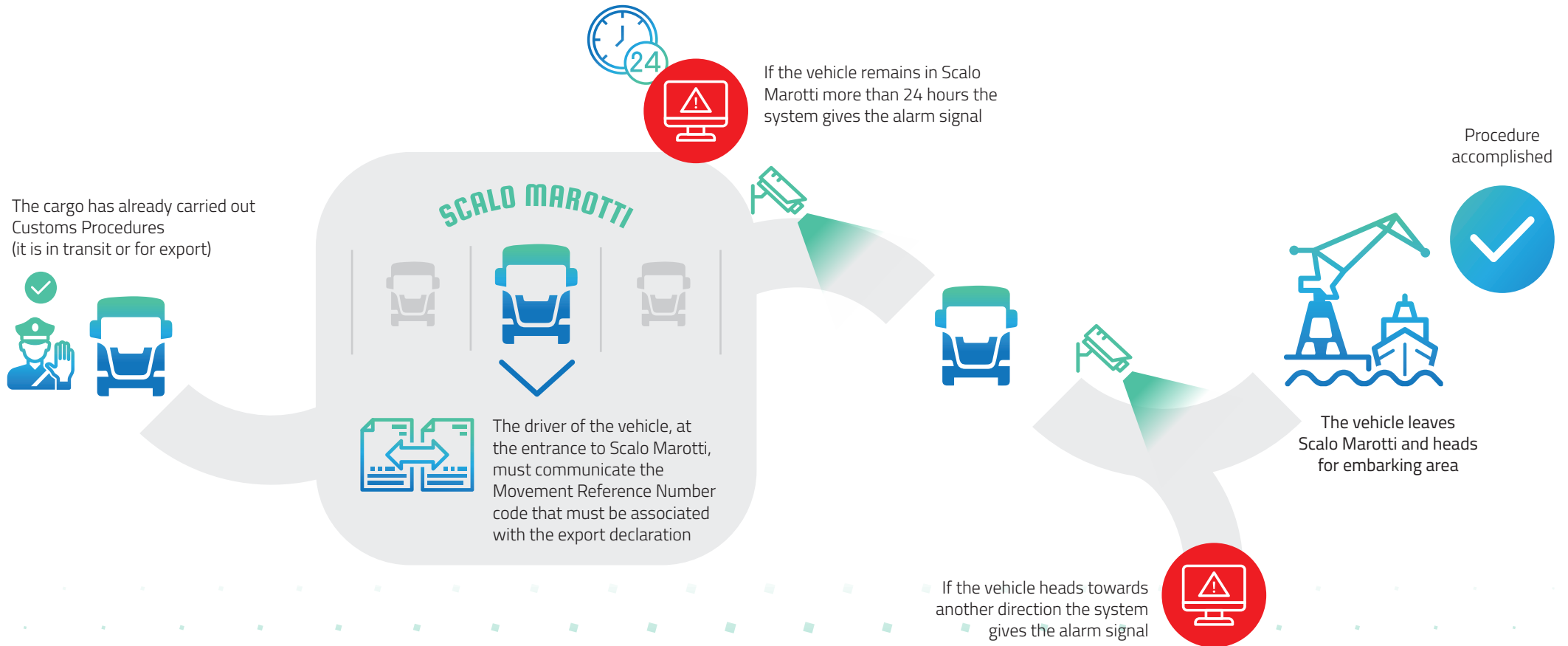


EMBARKING FLOW

USE CASE 1 PATH 1



Must the cargo carry out Customs procedures? **NO**



EMBARKING FLOW

USE CASE 1 PATH 2



Must the cargo carry out Customs procedures? **NO**

The cargo must not carry out Customs Procedures



The vehicle leaves Scalo Marotti and heads for embarking area

Procedure accomplished



If the vehicle heads towards another direction the system gives the alarm signal



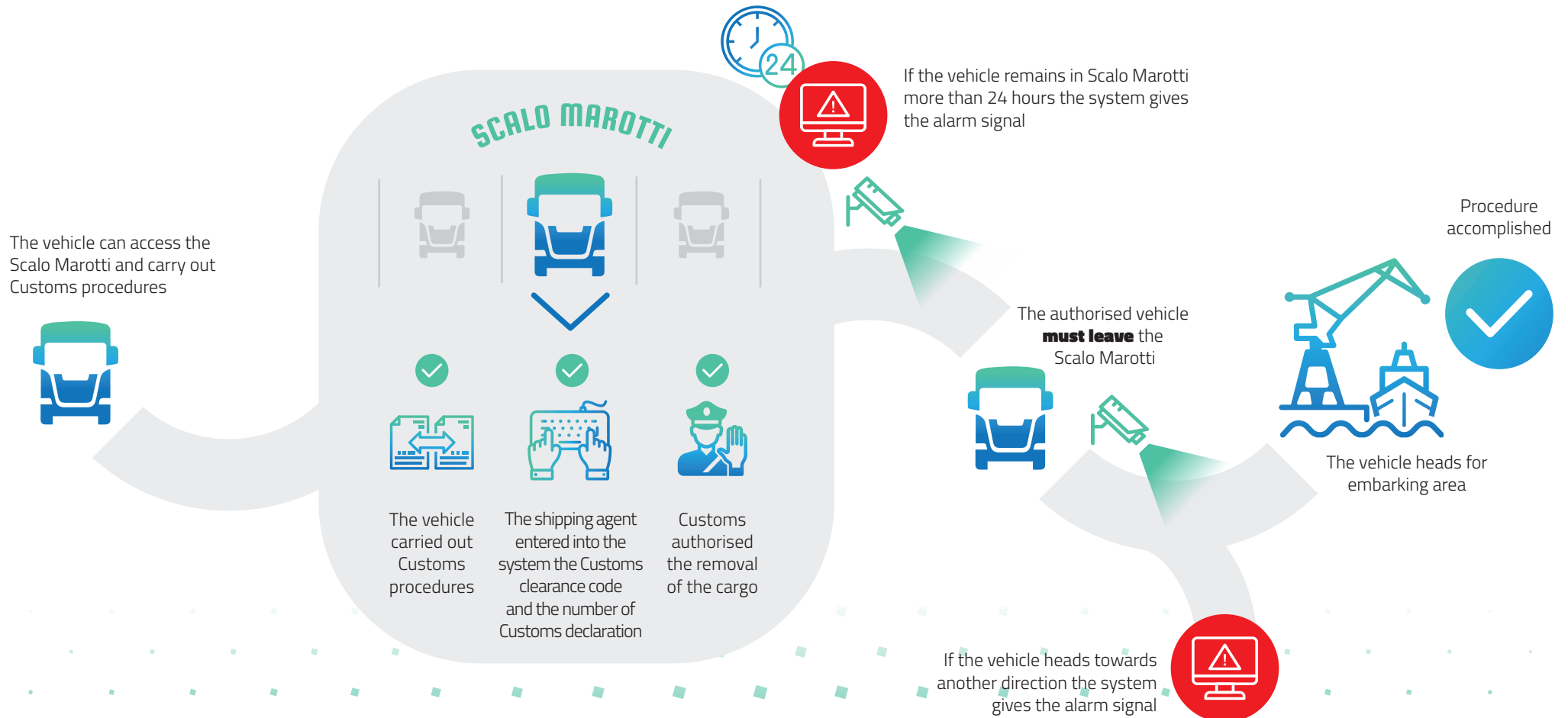
EMBARKING FLOW

USE CASE 2 PATH 1



Must the cargo carry out Customs procedures? **YES**

Is the vehicle known to the system because the shipping agents has entered the reservations and plates list? **YES**



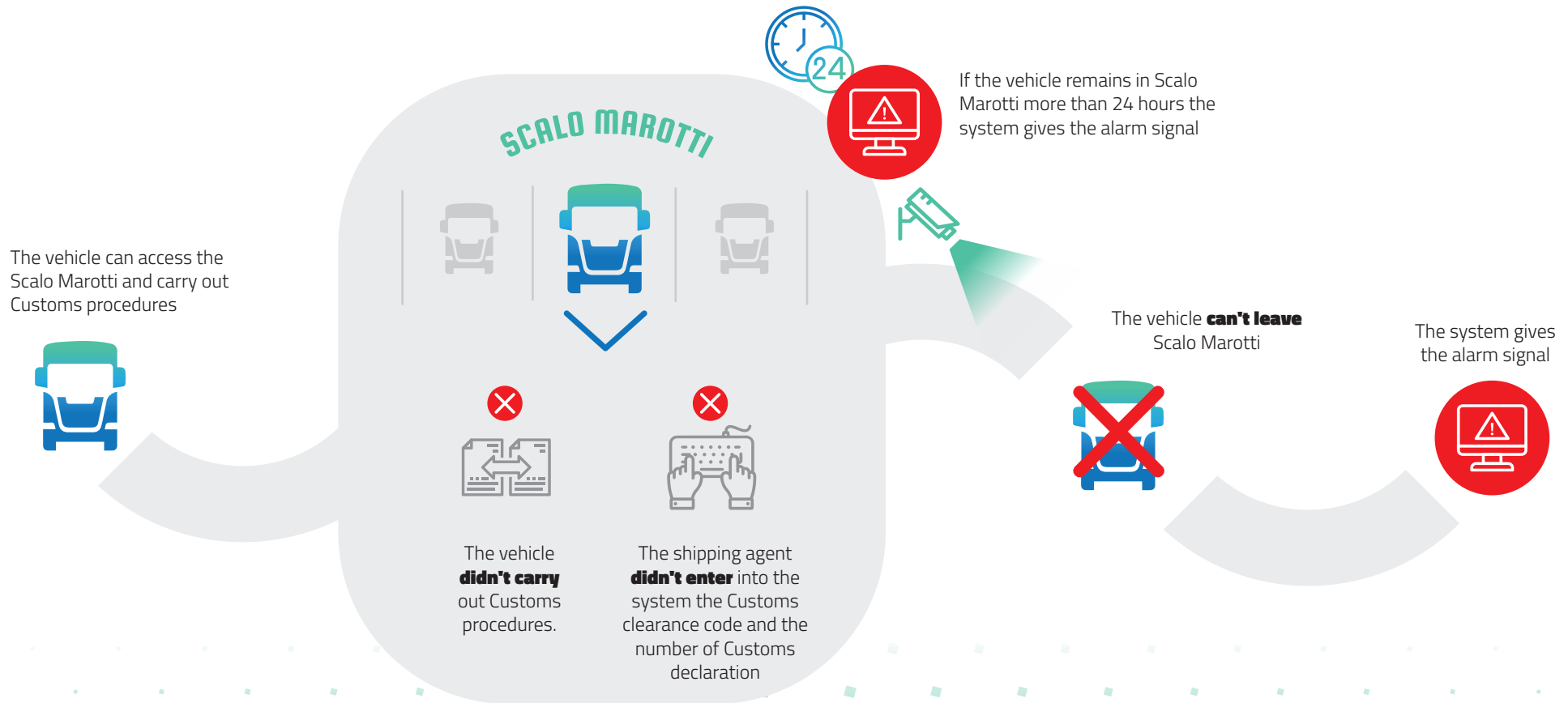
EMBARKING FLOW

USE CASE 2 PATH 2



Must the cargo carry out Customs procedures? **YES**

Is the vehicle known to the system because the shipping agents has entered the reservations and plates list? **YES**



EMBARKING FLOW

USE CASE 2 PATH 3



Must the cargo carry out Customs procedures? **YES**

Is the vehicle known to the system because the shipping agents has entered the reservations and plates list? **YES**



EMBARKING FLOW

USE CASE 3 PATH 1



Must the cargo carry out Customs procedures? **YES**

Is the vehicle known to the system because the shipping agents has entered the reservations and plates list? **NO**

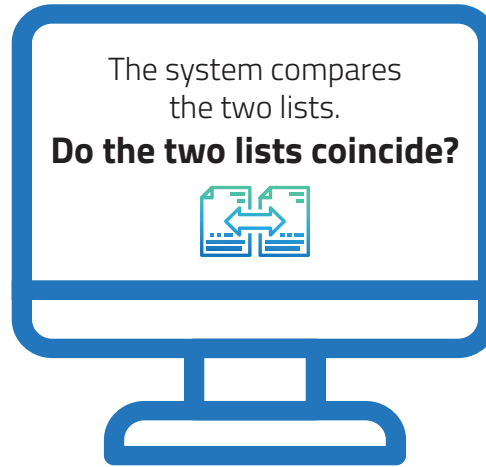
The vehicle **can't access** the Scalo Marotti until it has a reservation





FINAL CHECK

The **Artificial Intelligence system** uploads the list of vehicles passed through each gate



Shipping agents upload the plates list of the vehicles embarked on each ship

NO

YES

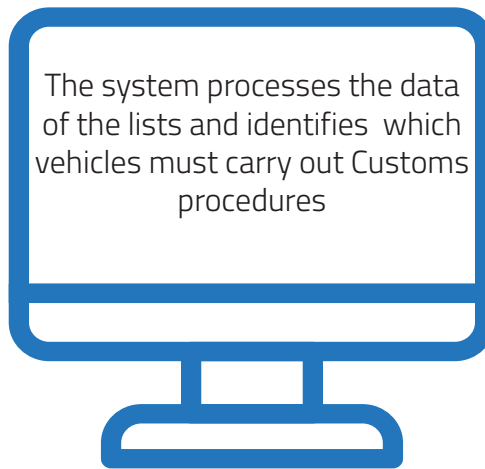
The system gives the alarm signal
IRREGULAR LIST



The system doesn't give the alarm signal
CORRECT LIST

LISTS UPLOADING

The **shipping agent** uploads the list of disembarking vehicles into the system



Shipping agents upload ENS for ferries from third countries



Shipping agents upload the cargomanifest

The cargo **must** carry out Customs Procedures



The cargo **must not** carry out Customs Procedures



DISEMBARKING FLOW

USE CASE 1 PATH 1



Must the cargo carry out Customs procedures? **YES**



The vehicle disembarks



The vehicle doesn't go to Scalo Marotti:
the system gives the alarm signal

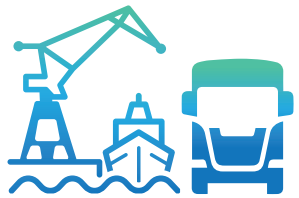


DISEMBARKING FLOW

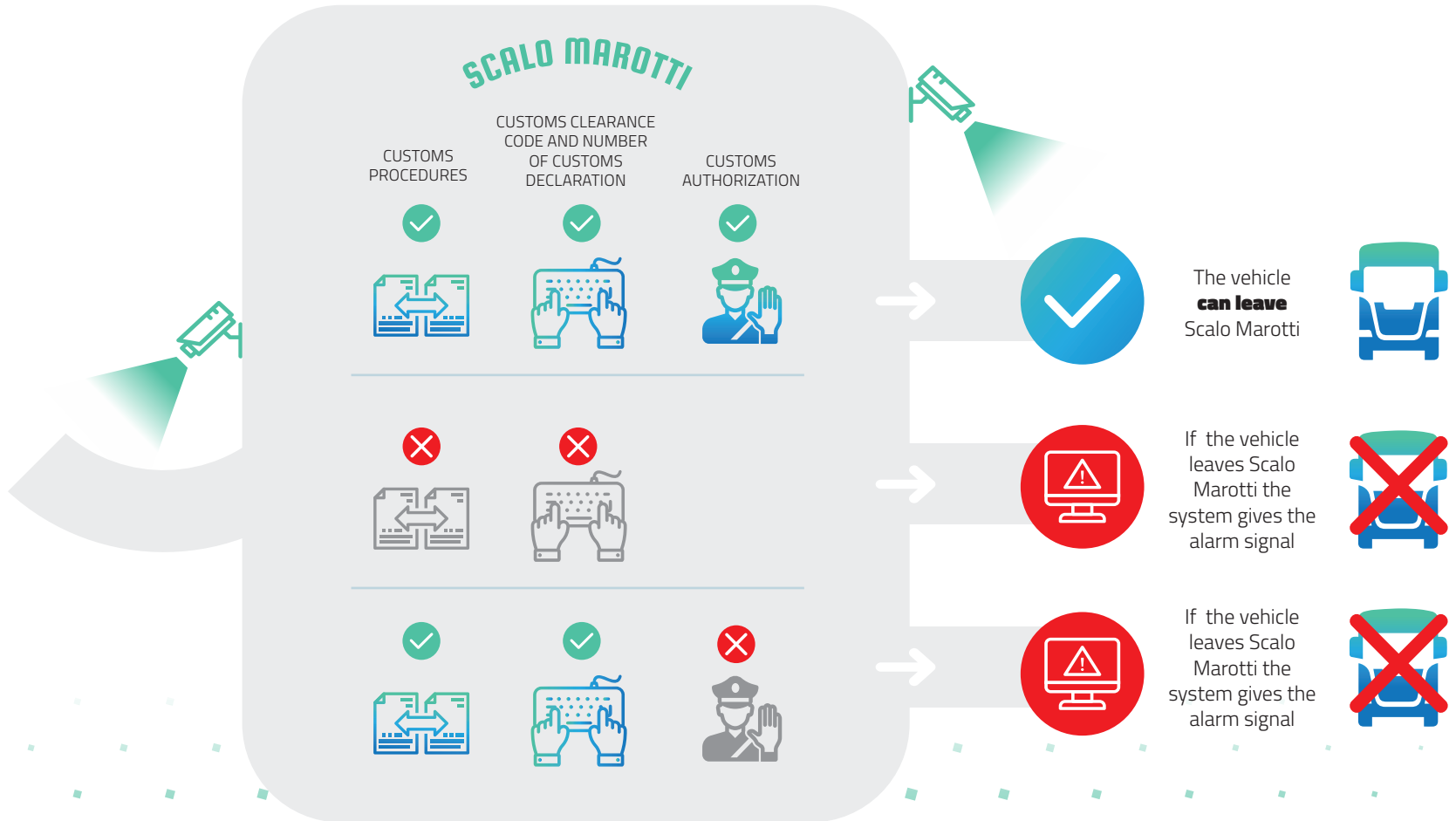
USE CASE 1 PATH 2



Must the cargo carry out Customs procedures? **YES**



The vehicle disembarks and heads for Scalo Marotti



DISEMBARKING FLOW

USE CASE 2 PATH 1



Must the cargo carry out Customs procedures? **NO**

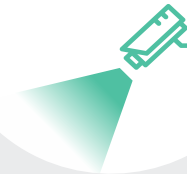


The vehicle disembarks and heads for Scalo Marotti



The cargo has already carried out Custom Procedures

The vehicle is in transit and has Movement Reference Number



SCALO MAROTTI



The vehicle **is authorised** to access the Scalo Marotti for customs procedures

DISEMBARKING FLOW

USE CASE 2 PATH 2



Must the cargo carry out Customs procedures? **NO**

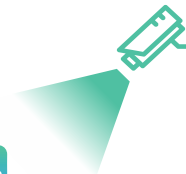


The vehicle disembarks



The cargo hasn't already carried out Customs Procedures

The cargo must not carry out Customs procedures



PORT EXIT GATE



The vehicle **can leave** the port area



If the vehicle heads towards another direction the system gives the alarm signal



Procedure accomplished



CENTRAL ADRIATIC PORTS AUTHORITY

 Molo S. Maria, 60121 Ancona

 www.porto.ancona.it

 info@porto.ancona.it

 tel (+39) 071 2078 968

DEVELOPMENT AND PROMOTION MANAGER

Mr. Guido Vettorel

 vettorel@porto.ancona.it

EU PROJECT MANGER

Ms. Elena Montironi

 montironi@porto.ancona.it

 [Click here to find out more about SMART - C](#)



Ports of Pesaro, Falconara Marittima, Ancona, S. Benedetto, Pescara, Ortona



Co-financed by the Connecting Europe
Facility of the European Union